

# SNA CHANL2 SID; Proposed HAYLO



Federal Aviation Administration

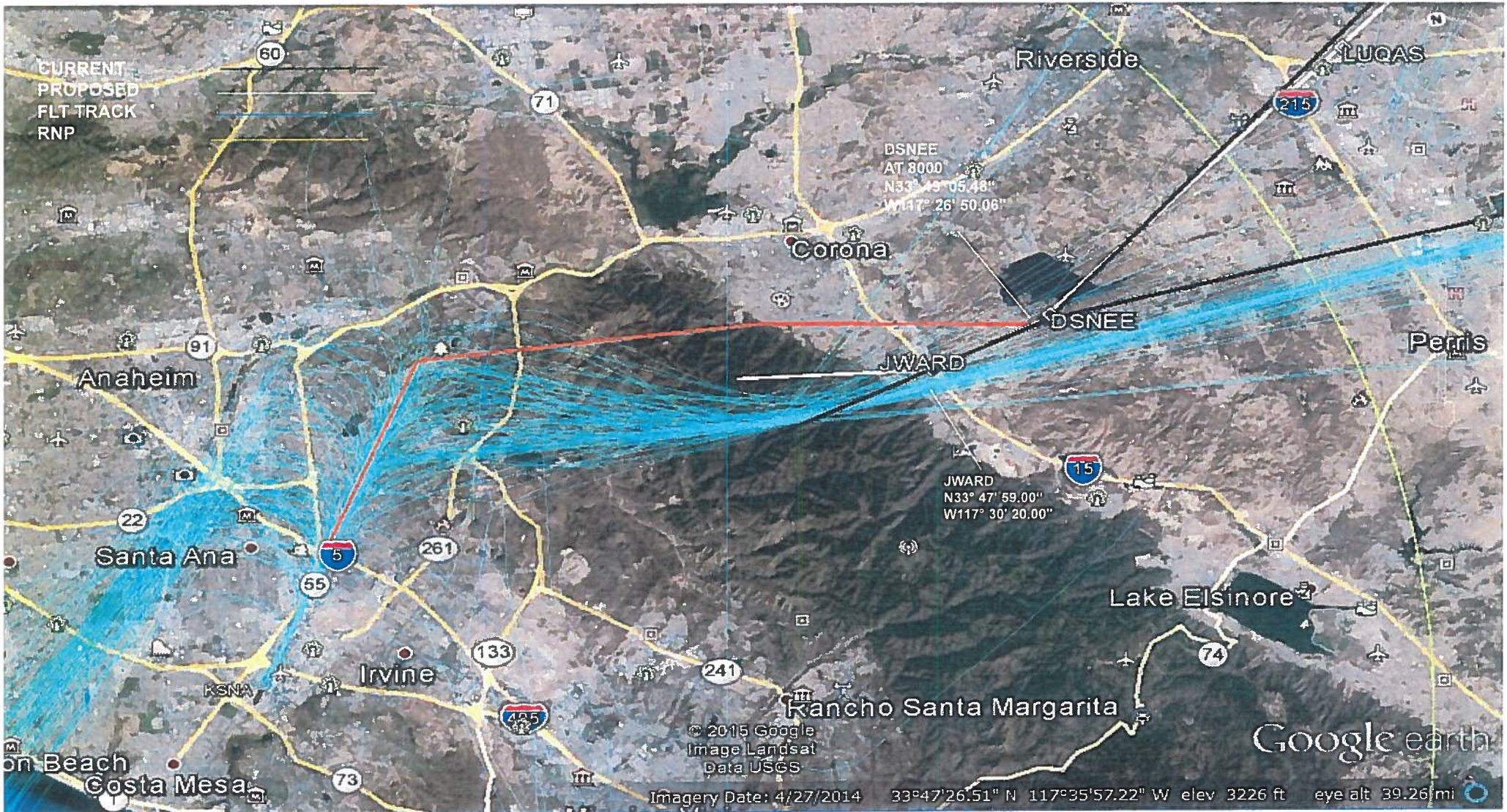


# SNA IRVINE3 SID; Proposed HOBOW SID





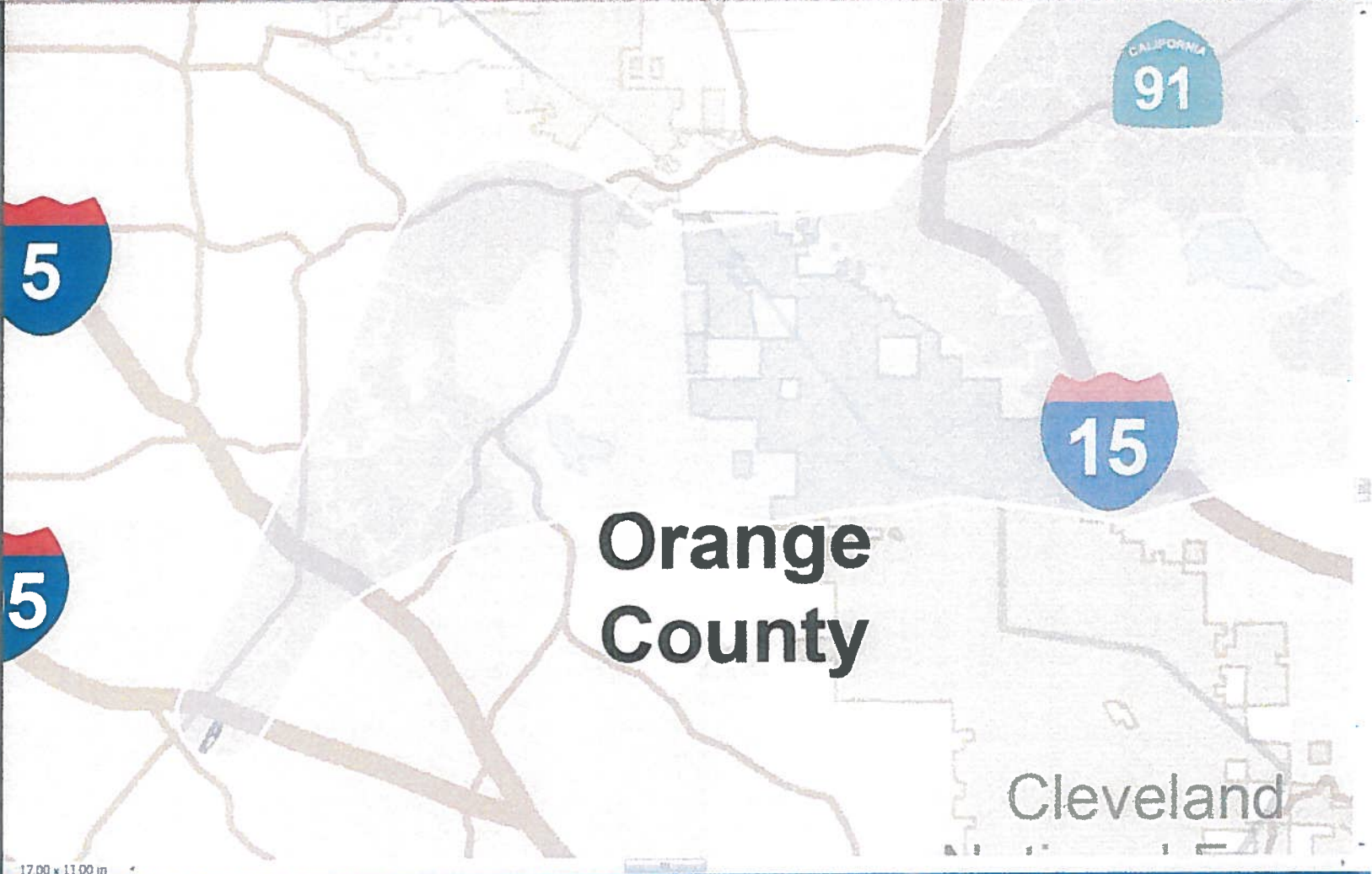
# SNA KEFER3 STAR; Proposed DSNEE STAR



Federal Aviation  
Administration



- Layers
- SMO EAST DEP - Radar Vector
  - SMO WEST DEP - Radar Vector
  - SNA PROCEDURES
  - SNA DSNEE WEST ARR - RNAI
  - SNA KEFFR3 EAST ARR - RNAI
  - SNA KEFFR3 WEST ARR - RNAI
  - SNA OHSEA EAST ARR - RNAI
  - SNA OHSEA WEST ARR - RNAI
  - SNA ROOBY EAST ARR - RNAI
  - SNA TILLT EAST ARR - RNAI
  - SNA TILLT WEST ARR - RNAI
  - SNA KAYOH5 EAST ARR - Con
  - SNA KAYOH5 WEST ARR - Con
  - SNA TANDY3 EAST ARR - Con
  - SNA TANDY3 WEST ARR - Con
  - SNA EAST ARR - Radar Vector
  - SNA WEST ARR - Radar Vector
  - SNA FINZZ WEST DEP - RNAI
  - SNA HAWWC EAST DEP - RNAI
  - SNA HAWWC WEST DEP - RNAI
  - SNA HAYLO EAST DEP - RNAI
  - SNA HAYLO WEST DEP - RNAI
  - SNA HOBOW EAST DEP - RNAI
  - SNA MIKAA EAST DEP - RNAI
  - SNA PIGGN EAST DEP - RNAI
  - SNA PIGGN WEST DEP - RNAI
  - SNA PLZZA EAST DEP - RNAI
  - SNA PLZZA WEST DEP - RNAI
  - SNA STREL3 WEST DEP - RNAI
  - SNA ANAHM4 EAST DEP - Con
  - SNA ANAHM4 WEST DEP - Con
  - SNA CHANL2 WEST DEP - Con
  - SNA DUUKES WEST DEP - Con
  - SNA ELB1 EAST DEP - Convent



**Orange County**

Cleveland National Forest

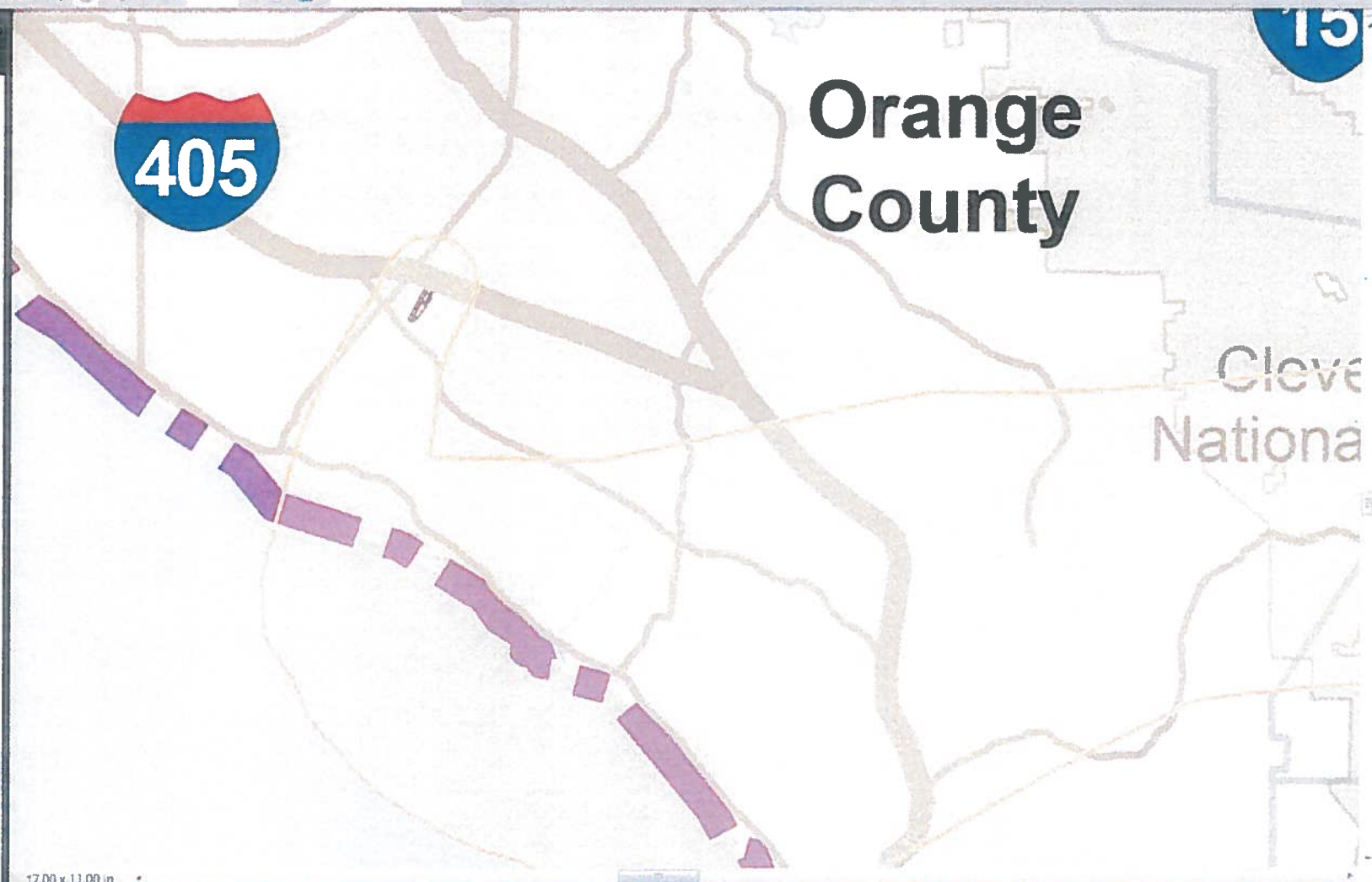
5, 15, 91

Layers

- SMO EAST DEP - Radar Vector
- SMO WEST DEP - Radar Vector
- SNA PROCEDURES
- SNA DSNEE WEST ARR - RNAV
- SNA KEFFR3 EAST ARR - RNAV
- SNA KEFFR3 WEST ARR - RNAV
- SNA OHSEA EAST ARR - RNAV
- SNA OHSEA WEST ARR - RNAV
- SNA ROOBY EAST ARR - RNAV
- SNA TILLT EAST ARR - RNAV
- SNA TILLT WEST ARR - RNAV
- SNA KAYOH5 EAST ARR - Con
- SNA KAYOH5 WEST ARR - Con
- SNA TANDY3 EAST ARR - Con
- SNA TANDY3 WEST ARR - Con
- SNA EAST ARR - Radar Vector
- SNA WEST ARR - Radar Vector
- SNA FINZZ WEST DEP - RNAV
- SNA HAWWC EAST DEP - RNAV
- SNA HAWWC WEST DEP - RNAV
- SNA HAYLO EAST DEP - RNAV
- SNA HAYLO WEST DEP - RNAV
- SNA HOBOW EAST DEP - RNAV
- SNA MIKAA EAST DEP - RNAV
- SNA PIGGN EAST DEP - RNAV
- SNA PIGGN WEST DEP - RNAV
- SNA PLZZA EAST DEP - RNAV
- SNA PLZZA WEST DEP - RNAV
- SNA STREL3 WEST DEP - RNAV
- SNA ANAHM4 EAST DEP - Con
- SNA ANAHM4 WEST DEP - Con
- SNA CHANL2 WEST DEP - Con
- SNA DUUKE3 WEST DEP - Con
- SNA ELB1 EAST DEP - Convent



- Layers
- SNA TILLT WEST ARR - RNAV
  - SNA KAYOH5 EAST ARR - Cor
  - SNA KAYOH5 WEST ARR - Cor
  - SNA TANDY3 EAST ARR - Cor
  - SNA TANDY3 WEST ARR - Cor
  - SNA EAST ARR - Radar Vector
  - SNA WEST ARR - Radar Vector
  - SNA FINZZ WEST DEP - RNAV
  - SNA HAWWC EAST DEP - RNAV
  - SNA HAWWC WEST DEP - RNAV
  - SNA HAYLO EAST DEP - RNAV
  - SNA HAYLO WEST DEP - RNAV
  - SNA HOBOW EAST DEP - RNAV
  - SNA MIKAA EAST DEP - RNAV
  - SNA PIGGN EAST DEP - RNAV
  - SNA PIGGN WEST DEP - RNAV
  - SNA PLZZA EAST DEP - RNAV
  - SNA PLZZA WEST DEP - RNAV
  - SNA STREL3 WEST DEP - RNAV
  - SNA ANAHM4 EAST DEP - Cor
  - SNA ANAHM4 WEST DEP - Cor
  - SNA CHANL2 WEST DEP - Cor
  - SNA DUUKE3 WEST DEP - Cor
  - SNA ELB1 EAST DEP - Convent
  - SNA ELB1 WEST DEP - Convent
  - SNA IRV3 EAST DEP - Convent
  - SNA MUSEL6 EAST DEP - Convent
  - SNA MUSEL6 WEST DEP - Convent
  - TRM PROCEDURES
  - TRM SIZLR EAST ARR - RNAV
  - TRM SIZLR WEST ARR - RNAV
  - TRM CLOWD1 EAST ARR - Cor
  - TRM CLOWD1 WEST ARR - Cor
  - TRM SBONO1 EAST ARR - Con



17.00 x 11.00 in